



GDL DATALOGGER

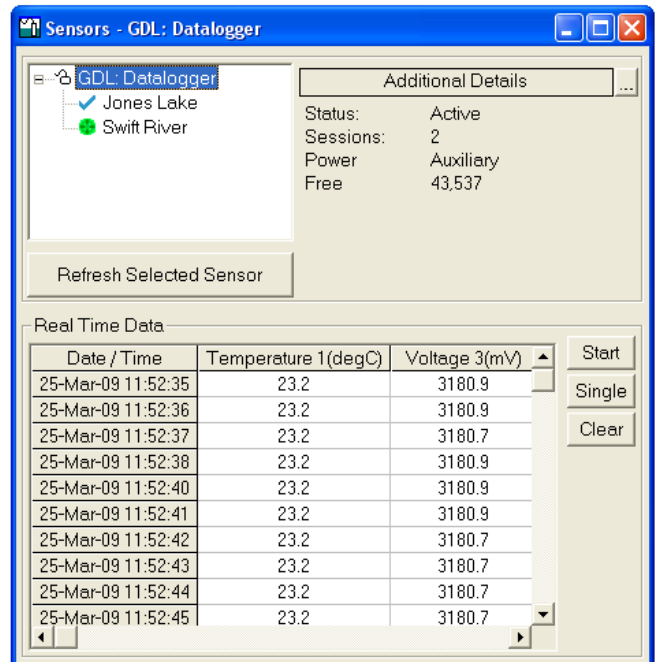
Multi-Channel Datalogger

Rugged, portable, compact

Internal 12 volt power supply

FEATURES

- **7 standard channels**
 - Two temperature (thermistor)
 - Three voltage
 - Two 4-20 mA
- **Takes analog signals and converts them to digital signals**
- **Over 25,000 records** – non-volatile memory
- **RS485 network** - connect with other AquiStar Smart Sensors
- **Wireless connectivity** – radios and/or cellular
- **Rugged control box** – polycarbonate (IP67)
- **Small size** – 5.5" x 3.1" x 2.6" (excluding connectors)
- **Internal 12 VDC power supply** – AA alkaline pack runs datalogger and can supply power to sensors
- **External power supplies available** – for more data intensive or long-term datalogging needs
- **Programmable warm-up time** – many sensors require a warm-up time before readings are stable. Easily set the required warm-up time for your particular equipment.
- **Standard or User Defined Units** – display your 4-20 mA or voltage readings in any unit of your choosing
- **Free Aqua4Plus control software**
 - Easily calibrate your sensors – built-in calibration calculator
 - Set up flexible recording sequences
 - Retrieve data
 - Monitor real time data
 - View collected data – tables & graphs
 - Export to spreadsheets and databases with a click of a button



APPLICATIONS

- Stormwater discharge monitoring
- Water quality monitoring
- Irrigation control
- Stream gauging
- Wetland monitoring
- Well, tank, tidal levels



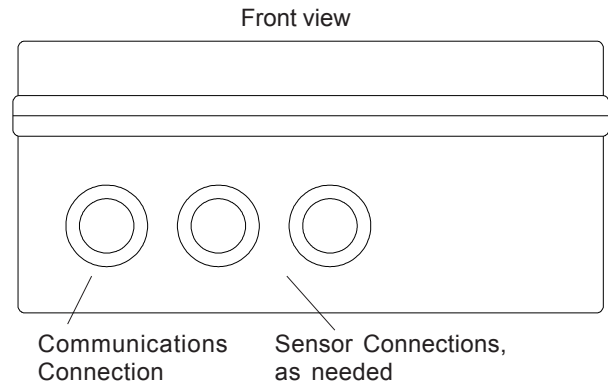
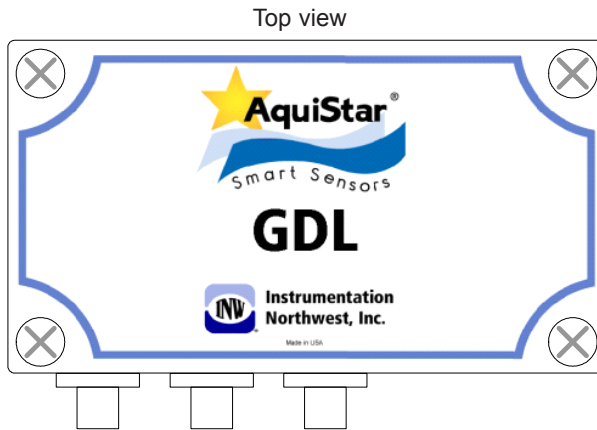
**Instrumentation
Northwest, Inc.**

1-800-776-9355
<http://www.inwusa.com>



GDL DATALOGGER

GDL CONTROL BOX



HOW TO ORDER

- Order part number 4N984.
- Contact INW Sales Representative for options.

GDL DATALOGGER	
4N984	GDL Datalogger
ACCESSORIES	
3B847	Communication kit (RS485/RS232 adapter, Interface cable, Aqua4Plus Software media kit)
3B830	RS485/RS232 adapter
3B385	Interface cable

Information in this document is subject to change without notice.

SPECIFICATIONS

TEMPERATURE CHANNELS

Thermistors Available for ranges from -35° C to +105° C

4-20 mA CHANNELS

Output Range 0 - 24 mA

VOLTAGE CHANNELS

Differential Ranges ± 5.0 volts
± 2.5 volts
± 1.25 volts
± 0.600 volts
± 0.300 volts
± 0.150 volts

Absolute voltages must be between -6 and + 15 volts

POWER SUPPLY

Internal 12 VDC
(AA alkaline cells)

Auxiliary 6 - 18 VDC

ENCLOSURE

Material Polycarbonate (IP67)

Dimensions 5.5" x 3.1" x 2.6"
(excluding connectors)

Connections 1 communication port
1 or more sensor ports
as needed

Instrumentation Northwest, Inc.



Sales and Service Locations

8902 122nd Ave., Kirkland • Washington 98033 USA
(425) 822-4434 • (425) 822-8384 FAX • info@inwusa.com
4620 Northgate Boulevard, Suite 170 • Sacramento, California 95834
(916) 922-2900 • (916) 648-7766 FAX • inwsw@inwusa.com

1-800-776-9355
<http://www.inwusa.com>